

Butcher's Cross

Mixed use: Retail, Workspace, Food & Beverage

Client:



Site location:

Limehouse, London

Brief:

The Butcher's Cross development will provide office space and retail outlets for small start-up enterprises. The aim of the project is to provide affordable accommodation for local businesses as well as creating an attractive destination and cultural hub for the E1W Limehouse area.

This part of London is still in need of development and many parts are still significantly run down. However, the recent increase in residential developments has seen the area's population rise. This has led to a requirement for an increase in retail, food and beverage and workspace options.

The chosen site is close to another development that offers small retail outlets and office space, mainly serving the creative industries.

Butcher's cross is designed to emulate the Box parks which have proved so successful in other parts of London. The external aesthetics will be similar to those development using Crates and Shipping containers but, the use of Maxi Space's modules for the building allows for better configuration, increased insulation values and a more comfortable internal environment.

The Building:

The development is made up of two blocks of units, each comprising of two modules. Each unit will be self-contained but, the design allows for expansion into adjacent units should a tenant wish to expand. This can be achieved swiftly and with minor impact on the building and building users.

Delivery & Installation:

The projected schedule for this project from design implementation to completion is 30 weeks.



Butcher's Cross

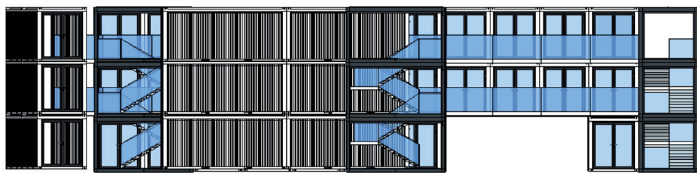
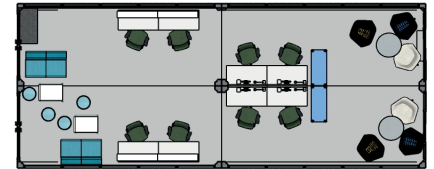
Mixed use: Retail, Workspace, Food & Beverage

Client:



Site location:

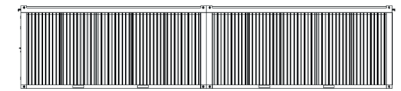
Limehouse, London



Back



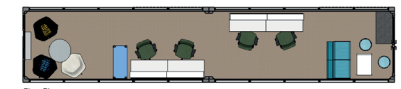
Front



LHS



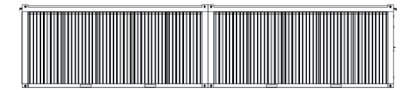
Back



Floor Plan



Front



RHS



Temporary + permanent modular building solutions

MaxiSpace.com